

**R
E
N
É**

**S
H
A
P
S
H
A
K**

**A.L.N.Y.
A.L.N.Y.,
E.A.I.F.,
I.A.I.,
*A.F.A.
A.I.A.**

**S
C
U
L
P
T
O
R**



Exhibition at the United Nations, New York City

RENE SHAPSHAK — Sculptor, Artist

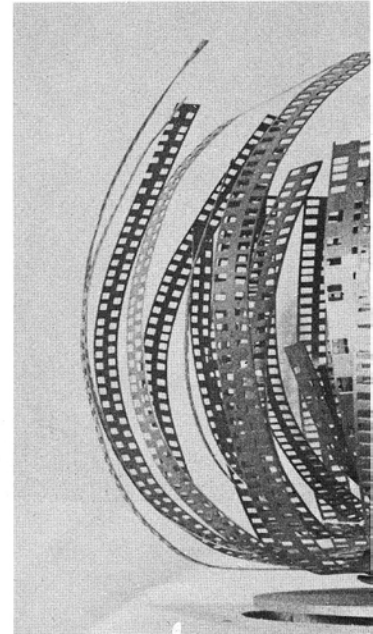
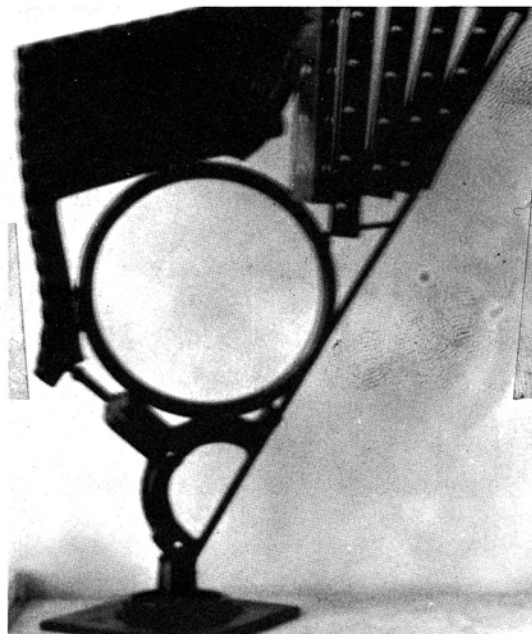
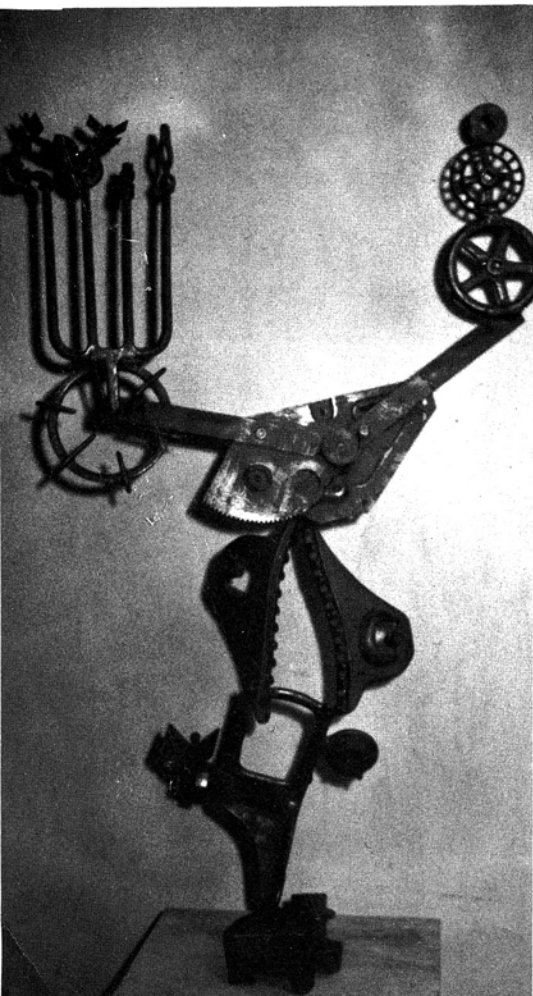
Rene Shapshak, world renowned sculptor and artist, was recently awarded a Doctorate in Humanities by the Rihlathea College, London, Ontario, Canada, for his outstanding contribution to the world of Art.

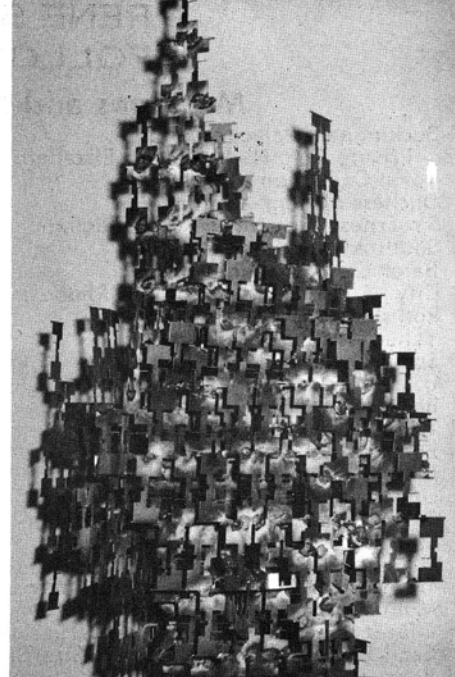
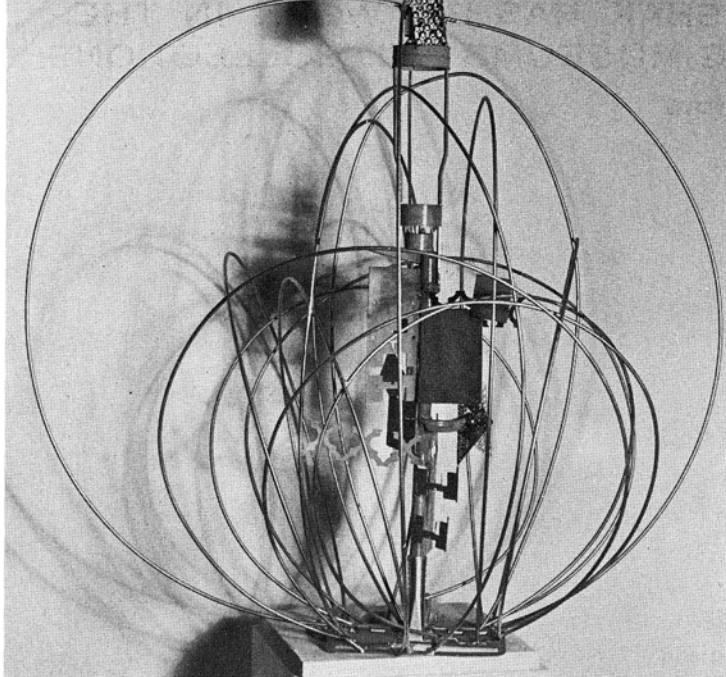
Born and Educated in Paris, an alumnus of the Ecole de Beaux Arts, Dr. Shapshak is considered one of the "Ecole de Paris." His sculptures are in many museums throughout the world and one of his major works is in the Post Office at Capetown, South Africa, a bas relief of 150 feet in marble.

Among his many commissioned sculptures are those of Mahatma Ghandi and Cecil Rhodes in England. The Sculpture Portraite of Ellen Church Marshall, the American Florence Nightingale, stands in Headquarters of the United Airlines in Chicago and bas reliefs of her are in the leading air terminals througout the world. The sculpture of former President Harry S. Truman graces the Parliament Building in Israel.

Dr. Shapshak has the Nations, New York. His Chiff and Schonegevel Smithsonian Institute, Missouri; in New York tion. Among the Spellman, Dr. Leo B. M Dr. Shapshak's great t ture, but his work as a standing.

He resides at the Hotel abelier is at 219 Seven

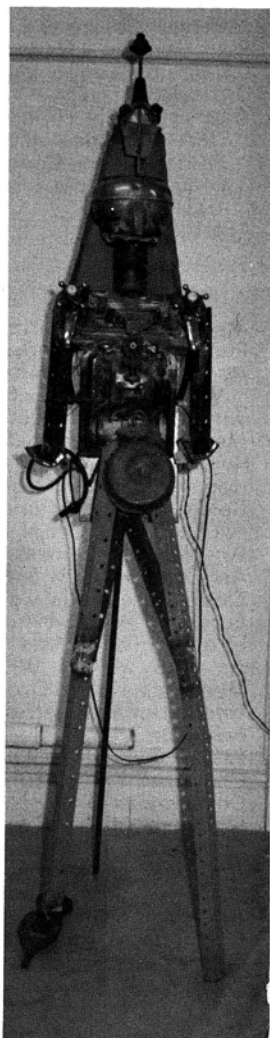
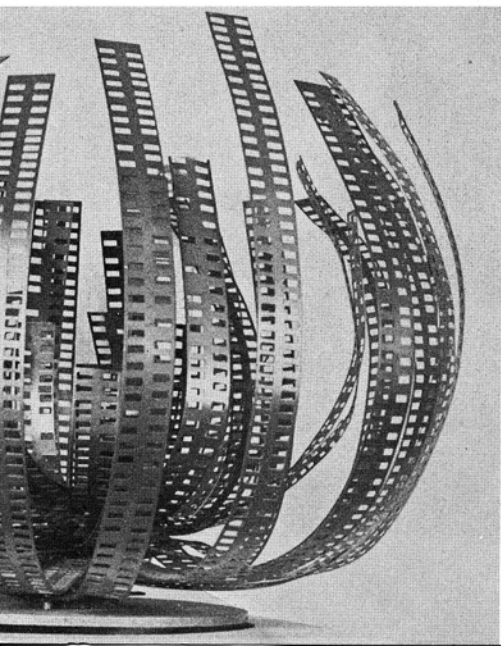
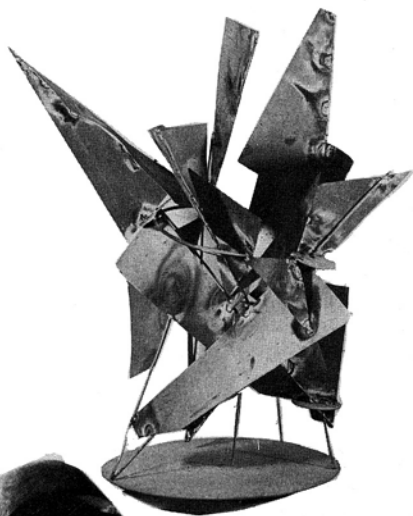




honor of being the only sculptor to exhibit in the United States. His art is represented in Buckingham Palace, in the Rothschild Collection in England, Pinakotheki, Athens, Greece and the Truman Library, Independence, Washington, D.C.; the Truman Library, Independence, and other cities in USA and in many other exhibits of dis-ruptures in New York City are those of Cardinal Francis Spellman, I. Rogosin, and Playwright Arthur Miller.

His talents extend not only to both traditional and modern sculpture but also to painting. His mediums include oil painting, water color, wood and glass carving are out-

standing in Chelsea, 222 West 23 Street. CH. 3-8768, CH. 3-3700. His studio is located at 100th Avenue, cor. 23 Street. YU. 9-6660 by appointmt.



RENE SHAPSHAK HAS HIS WORK IN THE FOLLOWING MUSEUMS AND COLLECTIONS:

Museums and Collectors*

Buckingham Palace—London
Private Col. H. M. Queen Elizabeth
Royal Collection—Denmark
Duchess of Kent—England
Sir Ernest Oppenheimer Collection
South Africa House—London
Baron De Rothchilde—Paris
City of Bulawayo—Southern Rhodesia
Rothschild Collection — London
Yehudi Menuhin Collection
Schiff Collection—London
U.S.A. Coast Guard—California
Ben-Uri—London
Trinity College of Music—London
Penakotheki—Athens, Greece
Musee National—Paris
University Museum—Salonika
Bezalel National Museum—Jerusalem
Smithsonian Institute—Washington
National Museum—Tel Aviv
Truman Library—Independence, Misosuri
Municipal Museum—Paris
Eliezer Ben-Yedude Museum—Jerusalem
Cecil Rhodes Museum Bishops Stortford — England
Bezalel School of Arts & Crafts—Jerusalem
Art Gallery Museum—Madras, India
Willimantic State College—Connecticut
Towmotor Corp., 1957
Pittsburgh Corning Corp., 1958
Westinghouse Electric, 1959
Kenmetal Corp., 1960
Alcoa, 1961-1063
Yepez Gallery — New York City
Jefferson Chemical Co., 1962
Ruth Gershon—New York City
Dominique Longo Collection
Dr. Helen Armistead Johnson—New York City

Also in private collections in:
USA—Canada—Argentina—France—Spain—Portugal
South Africa—Congo—Rhodesia—Mexico—Israel—Tokyo—
Greece — India — Ceylon — Italy — Switzerland — Germany —
Ireland, etc.

*Partial List

Awards and Honors*

Member of International Fine Arts Council
Ph.D. (H.C.) St. Andrews—England
Honorary Life Member, American International Academy,
Washington, D.C. (Medal)
Art Lecturer—Pinakotheki, Athens, 1951
Member, Professional Council, New York, 1956
Honorary Member A.J.L.F.—New York
Honorary Citizen, New Orleans, 1959
Delegate, International Academy to UN, New York, 1959
Art Lecturer, Donnel Library, New York, 1959 through 1965
Art Lecturer, Central Library, Fifth Ave., New York City 1969-61
Art Lecturer, City Art League, New York City, 1960 through 1965
Eloy Alfaro Medal—Panama, 1960
European Artists Who's Who, 1955-1967
International Artists Who's Who, 1965
American Artists Who's Who, 1965
Medal, Chevalier Order of St. Dennis of Zante, Greece
International American Institute, Washington, D.C. Medal
Lafayette Medal—Paris, New York
Patron, Syndicate African Artists
Chairman, Exhib. European Art for I.A.I., 1962
Commander — Order Konstantinien Nemagnique De St. Etienne
Golden Jubilee Award, Bronx, N.Y., 1964
Sculpture Jury, A.M.A. 1964
Art Juror, New Rochelle Art Assn. Exhib. 1967
Art Juror, Bronx Open Air Exhibition
Art Juror, Scarsdale Art Assn. Exhib., 1967
Doctorate of Humanities, Philathea College, London,
Ontario, Canada, 1967

*Partial List

